

Healthier Together & Community Solutions to Complex Health Challenges

Palm Healthcare Foundation

Abigail Goodwin, M.A., M.P.H.

Vice President, Grants & Community Investments



Financial Disclosure Statement

I do not have any financial relationships relative to the content of this program.



Palm Healthcare Foundation

- ▶ Our mission is to inspire and fund solutions to improve health in Palm Beach County



Our Approach

- ▶ **Collaborative Grantmaking**
 - ▶ Behavioral Health
 - ▶ Diabetes
 - ▶ Family Caregiving
 - ▶ Nursing Advancement
- ▶ **Social Change Campaigns**
 - ▶ Diabetes Month
 - ▶ Let's Move
 - ▶ Thank A Nurse
- ▶ **Learning & Capacity Networks**



Healthier Together Communities

- ▶ Boynton Beach
- ▶ Delray Beach
- ▶ Glades communities
- ▶ Jupiter
- ▶ Lake Worth
- ▶ Northern West Palm Beach/Riviera Beach





Collective Community Capacity & implementation Outcomes

Behavioral & Systems Changes *Impacts*

What is Being Tracked & Measured



- Increased Organizational Responsiveness to Targeted Community Needs
- Shifts in Awareness & Understanding of Issue Area
- Shifts in Cultural Norms & Capacities that Support Behavior Changes
- Increased Base of Support in Community
- Increased Funding

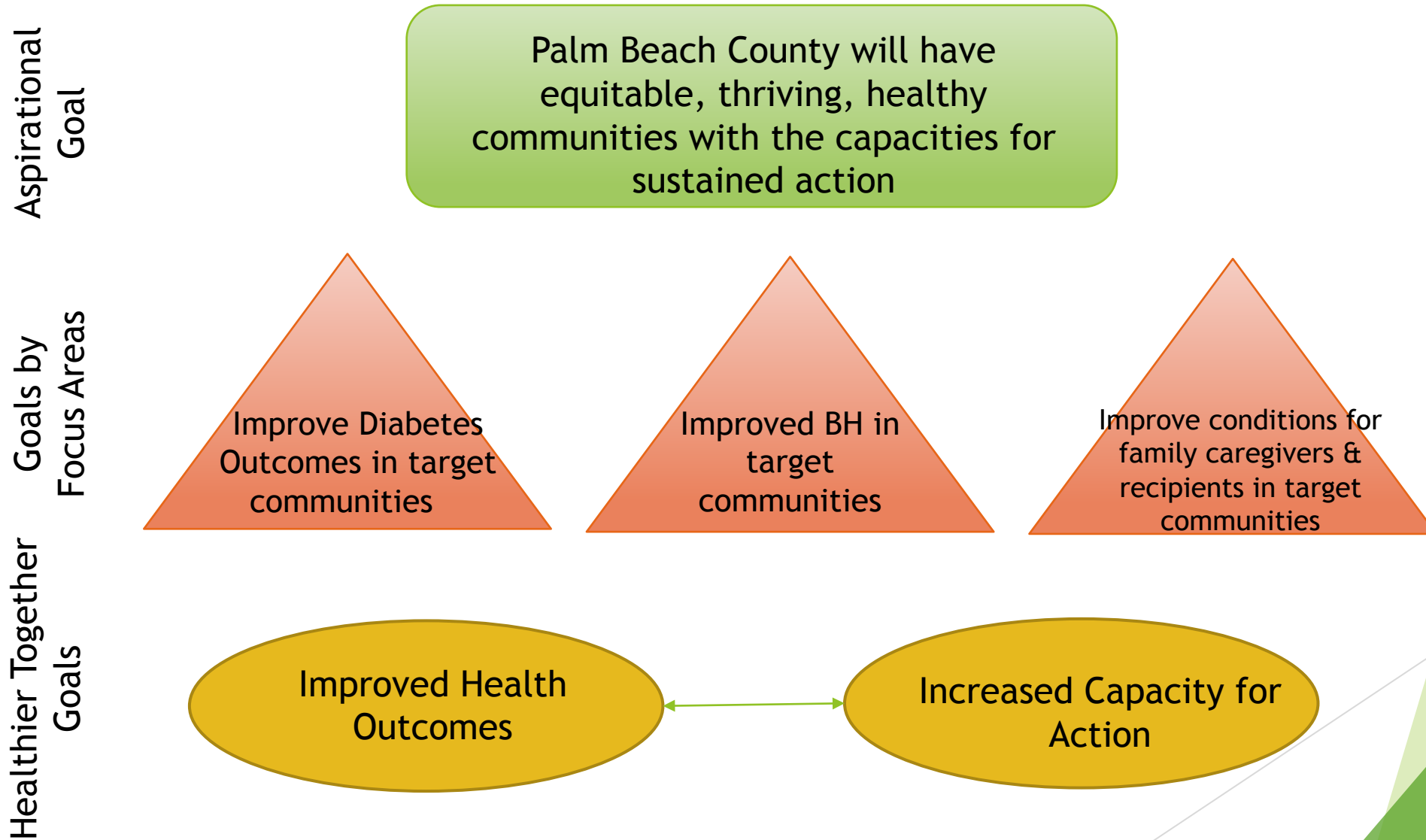
Communities with Capacities for Action

Improving Health in Palm Beach County

Developmental Evaluation Approach - Learning & Innovation

Formative & Summative Evaluation Approaches - Improvements & Case-Making

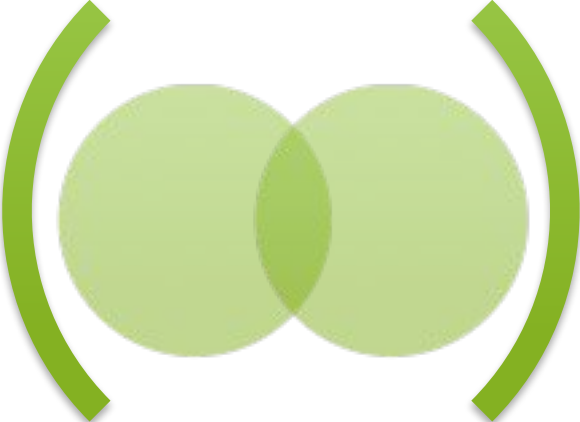
Theory of Change for Healthier Together



Palm Healthcare Foundation Alignment



Healthier Together & Collaborative Grantmaking



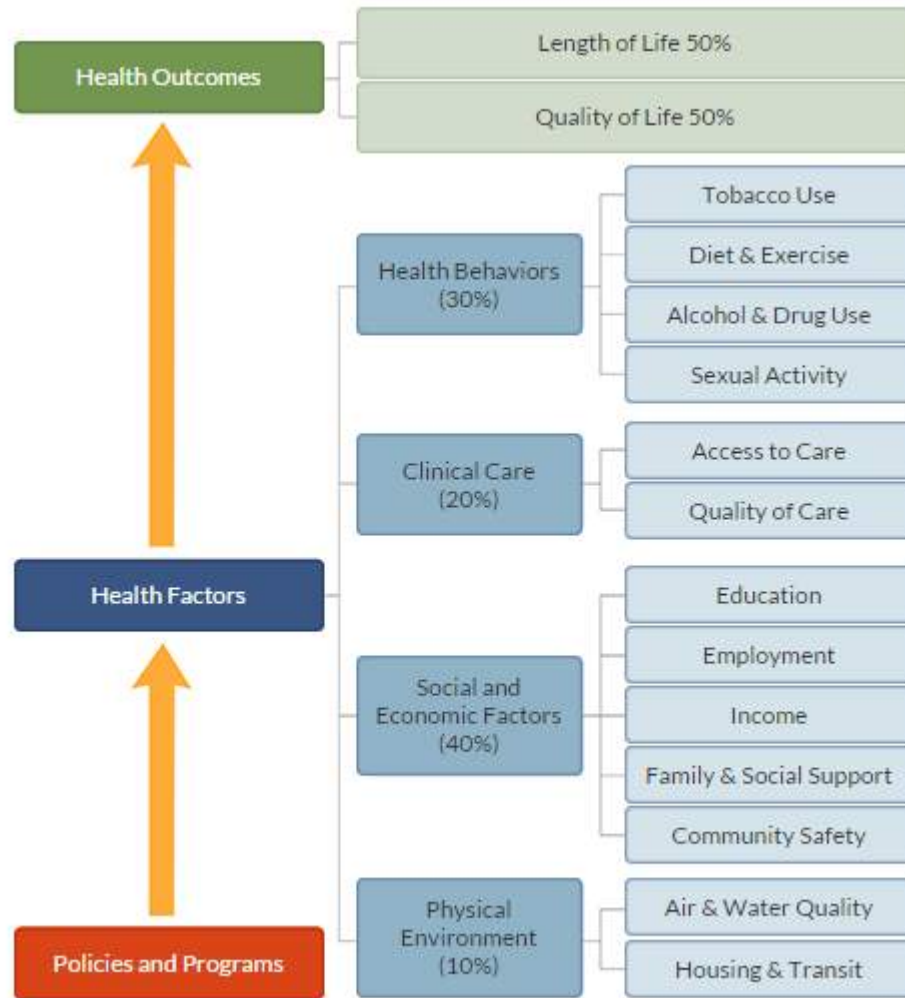
Systems & Innovative Projects



Palm Beach County

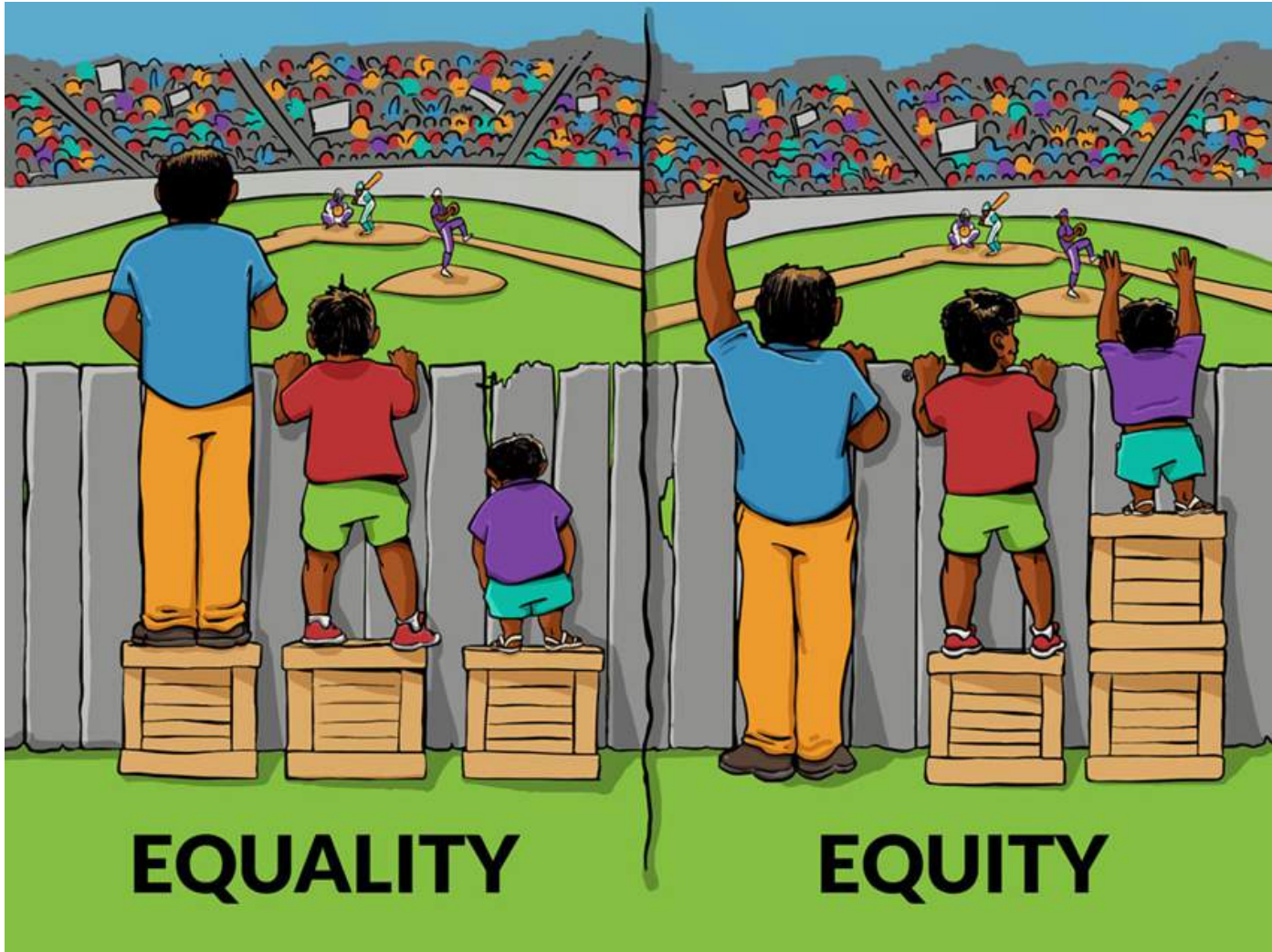


Health & Determinants of Health

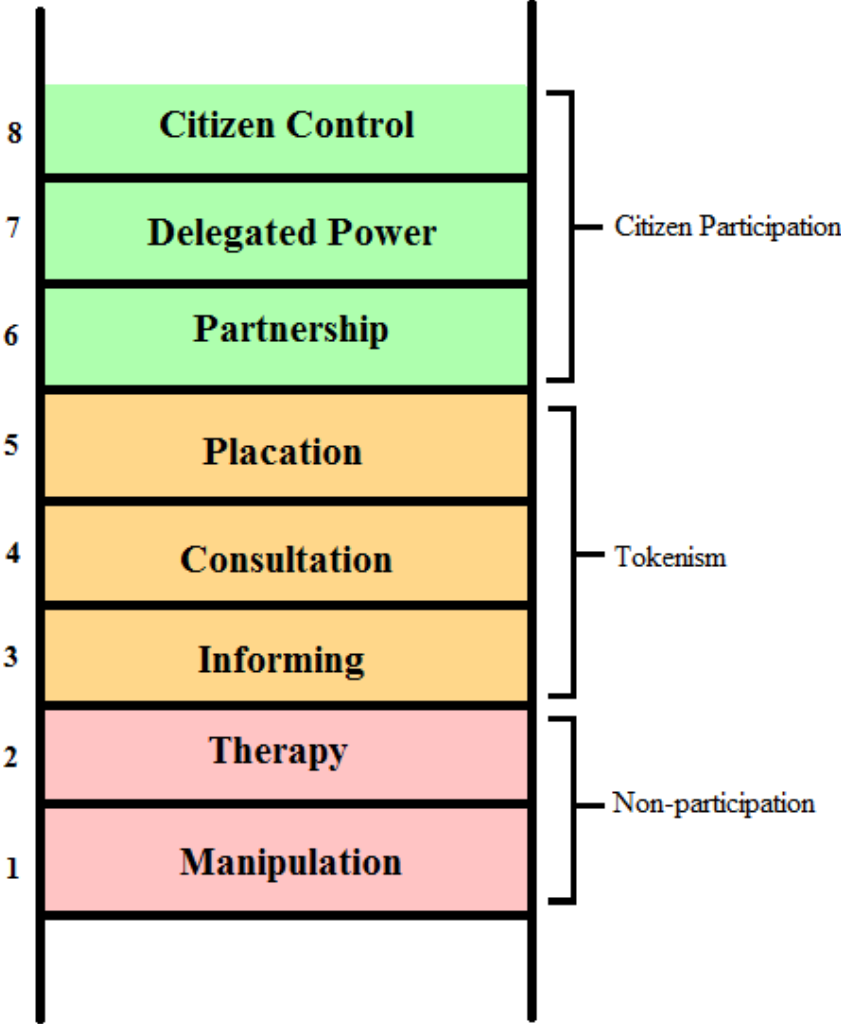


County Health Rankings model © 2014 UWPHH





We changed the way we work with communities.



Healthier Together work is different.

- ▶ Shifts the decision-making power
- ▶ Creates a shared space for dialogue
- ▶ Recognizes the expertise in the neighborhoods
- ▶ Fosters an organic response based on assets rather than reactive based on needs
- ▶ Emphasizes listening
- ▶ Generates co-learning among all involved
- ▶ Engages people rather than systems
- ▶ Grows civic engagement and formal and informal leadership
- ▶ Focuses on racial and health equity

Call to Action for Diabetes Management & Prevention

- ▶ Healthier Jupiter
 - ▶ Neighborhood and organizational lifestyle activities
 - ▶ Get Fit Map
 - ▶ Education classes through Jupiter Medical Center and YMCA
- ▶ Diabetes Coalition
- ▶ Certified Diabetes Educators
- ▶ Healthy Eating, Active Living efforts

Contact Information:

Abby Goodwin, VP, Grants & Community Investments

agoodwin@phfpbc.org

561-837-2279

Andy McAusland, Grants Manager

amcausland@phfpbc.org

561-837-2275

